



Bayly Plaza, Ajax - Lawerence Ave Group

We worked together with the Client, Architect, and Engineer to provide a comprehensive & cost-effective Landscape Plan that met the Town of Ajax's requirements. Our firm also prepared the Urban Design Report, including rendered 3D Images to convey the design intent effectively to the Town.



Henry Kortekaas & Associates Inc.

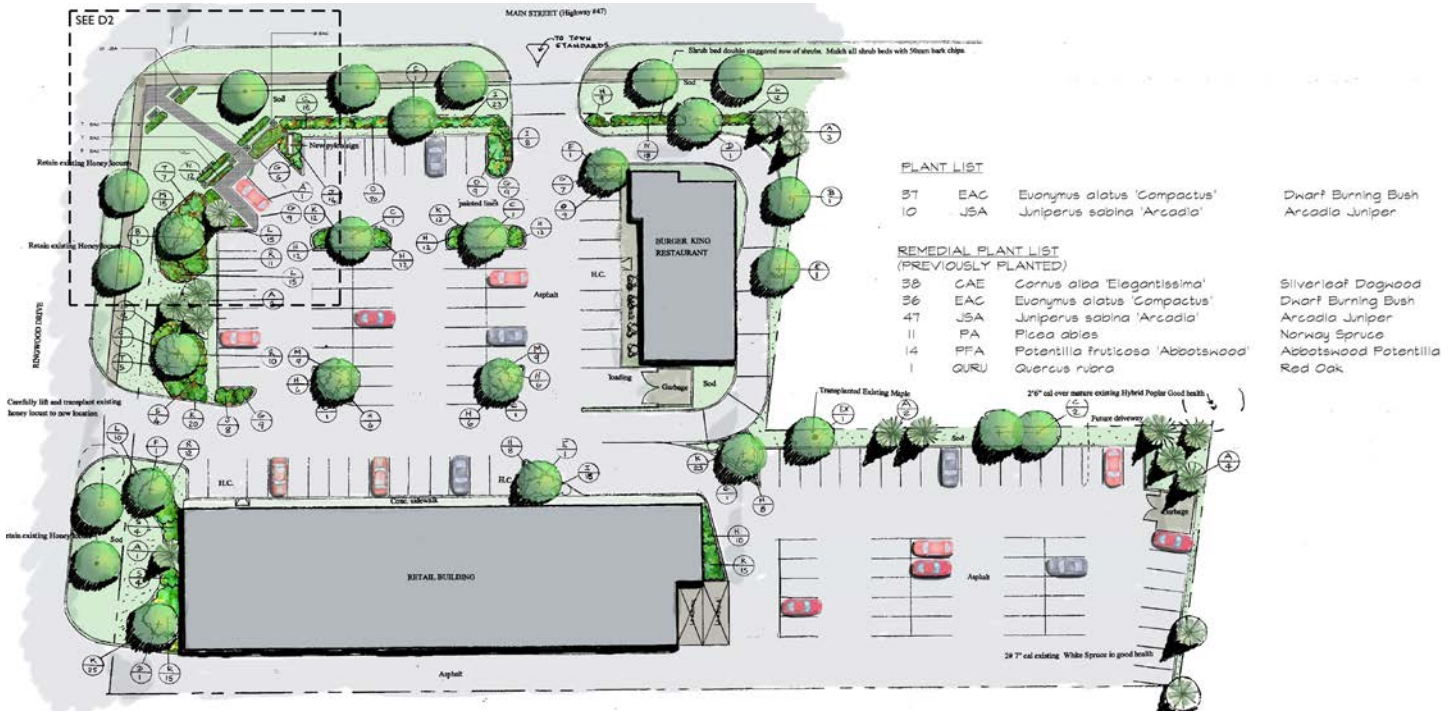
Landscape Architects, Arborists, Environmental & Recreational Planning

599 Liverpool Road Pickering, ON L1W 1R1

Tel: (905) 839-5599

Email: info@hkla.ca

Web: www.hkla.ca



Main St. and Ringwood Plaza, Stouffville

Henry Kortekaas & Associates Inc. prepared a comprehensive Landscape Plan for Site Plan approval of this plaza development. The design included irrigation and a maintenance regime.



Henry Kortekaas & Associates Inc.

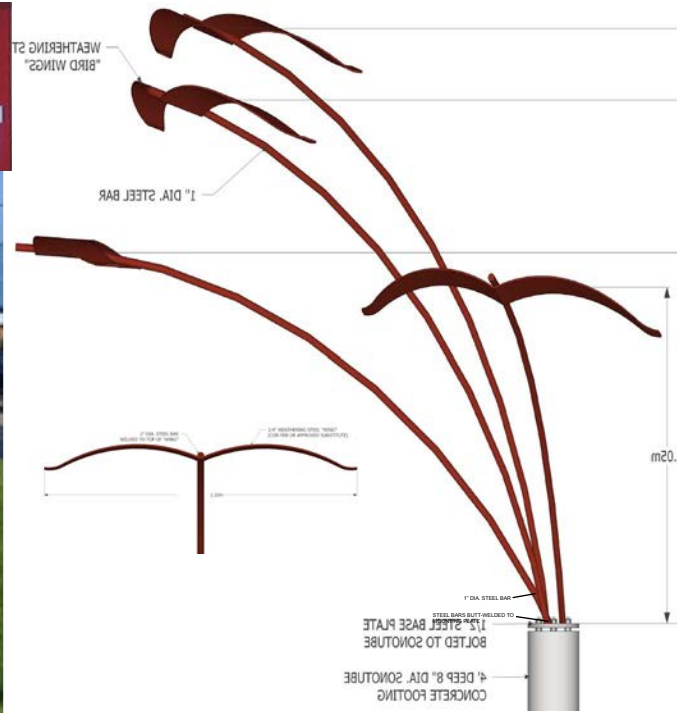
Landscape Architects, Arborists, Environmental & Recreational Planning

599 Liverpool Road Pickering, ON L1W 1R1

Tel: (905) 839-5599

Email: info@hkla.ca

Web: www.hkla.ca



Sure Fit, Ajax

The firm worked with the consulting engineer to develop and obtain approval of the Site Plan and Landscape Plan as well as a focal point sculptural element. Final approval was achieved in a timely fashion. The corner sculpture features is considered a key focal point in the Town of Ajax.



Henry Kortekaas & Associates Inc.
 Landscape Architects, Arborists, Environmental & Recreational Planning
 599 Liverpool Road Pickering, ON L1W 1R1
 Tel: (905) 839-5599
 Email: info@hkla.ca
 Web: www.hkla.ca

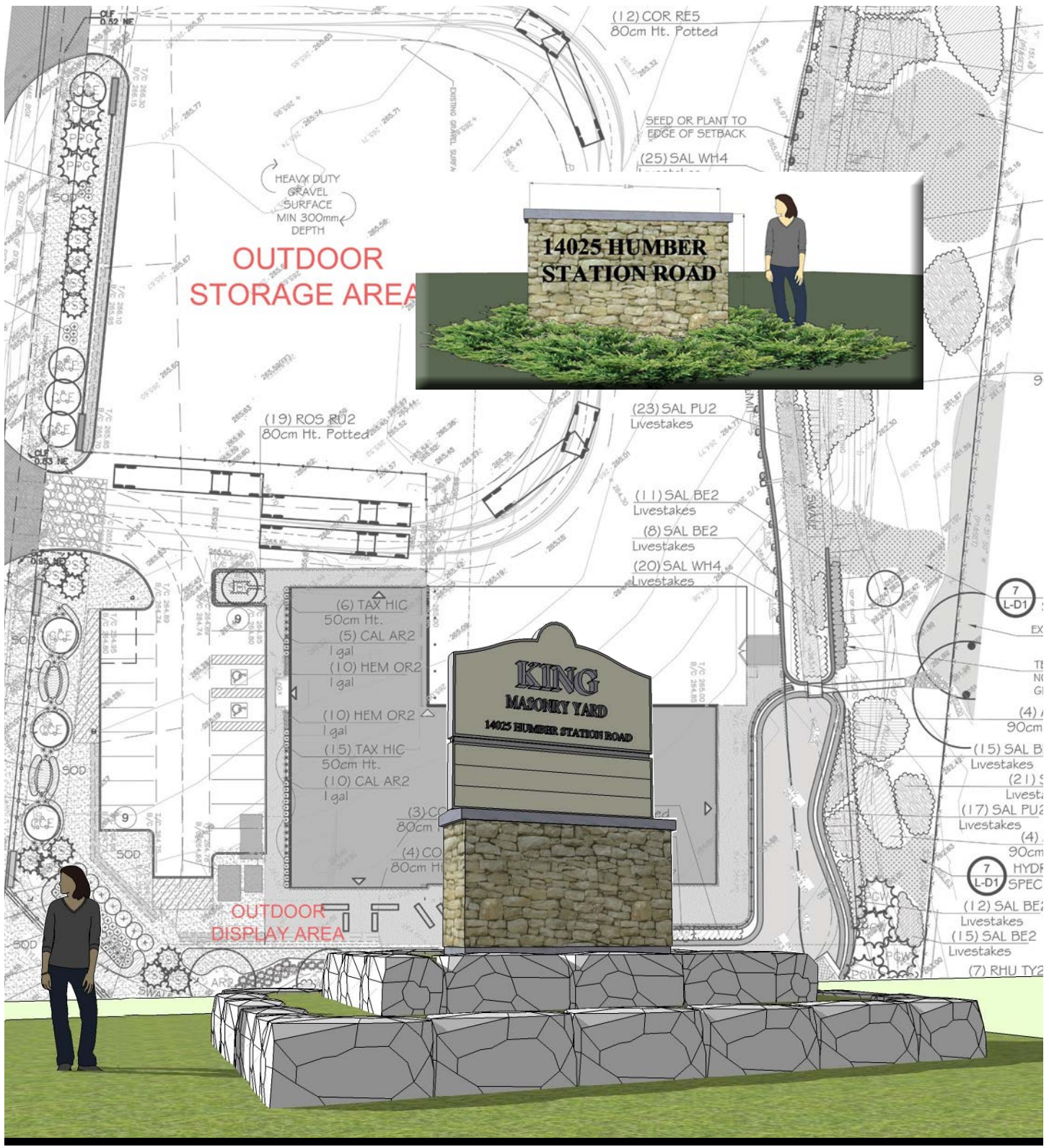


Durham - BMW & Mini Dealership

The firm prepared an overall concept and graphic layout of the Durham BMW & Mini dealership. The firm worked alongside the Architect and other Consultants to provide the client with a unique and eye-catching car dealership visible from Hwy 401. The firm proposed various architectural features for the corner display areas. The project is currently in the construction phase and slated to open in 2008.



Henry Kortekaas & Associates Inc.
 Landscape Architects, Arborists, Environmental & Recreational Planning
 599 Liverpool Road Pickering, ON L1W 1R1
 Tel: (905) 839-5599
 Email: info@hkla.ca
 Web: www.hkla.ca



King Masonry Yard, Caledon

Our firm was the prime consultant for this redevelopment project of a commercial property next to an environmentally sensitive creek and valley. We worked & coordinated with the Planner, Architect & Engineers to create detailed Site Plans, Landscape Plans and a Tree Preservation Report, as well as details for the high end masonry elements.



Henry Kortekaas & Associates Inc.

Landscape Architects, Arborists, Environmental & Recreational Planning

599 Liverpool Road Pickering, ON L1W 1R1

Tel: (905) 839-5599

Email: info@hkla.ca

Web: www.hkla.ca



**Cobourg Harbour Park
Live/Work Residences**

Our firm designed a sales brochure and 2-page flyer for the new and upcoming live/work residences in Cobourg. The firm also acted as Site Planners & Landscape Architects. We also prepared photo-realistic exterior and interior images for the Urban Design Report and for advertising.



Henry Kortekaas & Associates Inc.
 Landscape Architects, Arborists, Environmental & Recreational Planning
 599 Liverpool Road Pickering, ON L1W 1R1
 Tel: (905) 839-5599
 Email: info@hkla.ca
 Web: www.hkla.ca



**Cobourg Harbour Park
Live/Work Residences**

Our firm designed a sales brochure and 2-page flyer for the new and upcoming live/work residences in Cobourg. The firm also acted as Site Planners & Landscape Architects. We also prepared photo-realistic exterior and interior images for the Urban Design Report and for advertising.



Henry Kortekaas & Associates Inc.

Landscape Architects, Arborists, Environmental & Recreational Planning

599 Liverpool Road Pickering, ON L1W 1R1

Tel: (905) 839-5599

Email: info@hkla.ca

Web: www.hkla.ca