

# HENRY KORTEKAAS & ASSOCIATES INC.

599 Liverpool Road, Pickering, ON L1W 1R1

(905) 839-5599 - info@hkla.ca - www.hkla.ca

*Landscape Architecture*

*Recreational Planning*

*Environmental Planning*

*Site Planning*

*Consulting Arborists*

*Tree at Risk Assessors*



---

---

## FIRM PROFILE & STRUCTURE

### **HENRY KORTEKAAS AND ASSOCIATES INC.**

Landscape Architects, Arborists, Environmental and Recreation Planners  
599 Liverpool Road Pickering, ON L1W 1R1

Henry Kortekaas and Associates Inc. is an eight person firm of professionals established in 1983. We provide professional services including Landscape Architecture, Environmental Planning, Recreational Planning, Site Planning, and Arboricultural Consulting for commercial and residential developments.

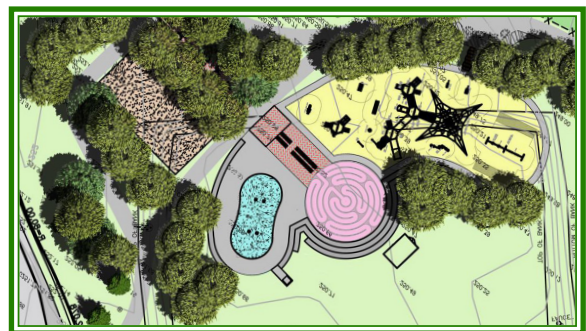
**Landscape Architecture** focuses on all aspects of site design – residential, estate lot subdivisions, commercial, industrial, institutional developments and Urban Design. As Landscape Architects, our team provides innovative solutions to a variety of design challenges. The firm has clients in both the private and public sectors, including other professionals such as Engineers and Architects.



**Arboricultural Consulting** studies the impact of development on tree and forest resources. Our firm works with private clients, Municipalities, and Agencies to protect and preserve these resources where possible and practical. If these resources cannot be protected, we assign fair value, based on International Standards for their compensation. As I.S.A. Tree Risk Assessors, we balance tree risks and benefits to determine the suitability of each tree for each site.



**Recreational Planning** is the design and implementation of Municipal and local parks, recreational Master Plans and golf course and driving range design. As Recreational Planners, our firm has been involved in major park land development throughout the Durham Region and GTA. We strive to achieve satisfied clients by providing creative, yet practical designs to meet local and community recreational needs.



---

**Environmental Planning** involves environmental and ecological assessments and vegetation inventories of proposed developments. Acting as Environmental Planners, our firm has been able to assist developers and municipal agencies on ways to best utilize their land in a sustainable manner, while still maintaining the environmentally sensitive component, for residential and commercial developments, as well as park and open space developments.



Henry Kortekaas and Associates Inc. has a competent team of Landscape Architects, Environmental Planners, Consulting Arborists, and Technicians to handle projects of any scale. The preparation of drawings is done through Computer Aided Design and Drafting software, specifically through an AutoCAD Civil 3D 2017 software system. This software enables faster preparation of detailed layout plans, construction drawings, detailed grading plans and is useful in creating 3D perspective views. LandFX is a organizational and planting program that allows the creation of quick concepts and structured, detailed planting plans. The firm also uses SketchUp for 3D modeling, Thea Render for realistic 3D renders, Illustrator for graphics and graphic animations, Photoshop, Power Point and InDesign for presentations, drawings, reports and illustrations. The use of current, state-of-the-art computer hardware and software technology assists the skilled team at Henry Kortekaas and Associates Inc. to develop high quality designs for reasonable fees.



Henry Kortekaas and Associates Inc. has two in house I.S.A. Certified Arborists, I.S.A. Tree at Risk Assessors, and an OMNRF Butternut Health Assessor. The firm's Arborists are also MNR Ecological Land Classification Certified.

Henry Kortekaas and Associates Inc. is committed to implementing Universal Design to achieve full accessibility. Our firm provides the highest possible level of service to its clients by preparing superior quality designs while reflecting their concern for the environment.

# HENRY J. KORTEKAAS

B.L.A., M.E.S., O.A.L.A.

*Principal Landscape Architect  
Environmental Planner  
Recreational Planner*



Henry founded his company, Henry Kortekaas & Associates Inc., in 1983. Through the creation of high quality and innovative design drawings, specifications, reports and renderings, Henry Kortekaas & Associates Inc. have established themselves as leaders in the field of Landscape Architecture without compromising environmental integrity. Henry Kortekaas is particularly interested in developing urban natural corridors for the benefit of residential and the natural environment.

Henry Kortekaas is an accomplished, award winning Landscape Architect, with experience in Environmental, Urban and Recreational Planning and Design. Henry holds an Honours Bachelor's degree in Landscape Architecture (BLA) from the University of Guelph ('75) and a Masters in Environmental Studies (MES) from York University ('82). Henry has over 42 years of professional experience in both the private and public sectors. It is no surprise that Henry has become known for his unique ability to find creative and appropriate development solutions for environmentally sensitive land while respecting cost constraints.

Henry is a long-standing member of the OALA and passionate about employing the three R's (Reduce, Reuse, Recycle) in his design solutions. He is well-versed in accessibility issues having been the Chair of the Region of Durham Accessibility Advisory Committee for 4 years. Henry incorporates accessibility opportunities wherever possible.

Henry's continuous focus is innovative, universally accessible design solutions while respecting client's budgets.

---

# HENRY J. KORTEKAAS, B.L.A., M.E.S., O.A.L.A.

## Education

**Honors Degree Landscape Architecture** - University of Guelph, 1975

**Masters of Environmental Studies, Recreational Planning & Design** - York University, 1982

## Awards

- 2015 PRO Award of Excellence in Design for the Park of Reflection in the Town of Whitby
- Durham Region Art of Transition Creative Arts Award 2014 - Visual Arts
- Unilock Design Award - BMW Durham, 2000
- CANSPA - Canadian Spa and Pool National Awards Competition, Residential Pool/Spa/Concrete
- The Learning Partnership Award, 1999, Tap Network
- SPA Award, 1986

## Certificates

- LSI Learning Academy Seminar 'Design Excellence in Play', November 18, 2015
- Green Roofs... Biological-Engineered Stormwater Mitigation Systems Certification, 2016

## Employment History

1984-Date	Principal of Henry Kortekaas & Associates Inc.
1992-1993	Town of Richmond Hill, Landscape Architect Project Manager (Short Term Contract)
1982-1984	Totten Sims Hubicki Associates, GOALRT Environmental Planner
1979-1982	City of Brampton, Landscape Architect, Parks Planner
1975-1979	David Tomlinson Landscape Architects, Junior Landscape Architect
1970-1975	Construction Superintendent of Various Landscape Construction Contract Projects

## Selected Art Sculptures

- 'Return' - Park of Reflection, Wounded Warriors, Whitby
- 'The Storm' - Town of Ajax
- 'Birds in Flight' - Surefit, Ajax
- 'Inukshuk' - OPG Darlington

## Published Paper Articles

- 'The Naturalization of a Tableland Park'; Ontario Report, June 1996, pages 26-28 & 36
- 'Golf Course Maintenance'; 1997
- 'Slab Transplanting Technique. Environmental'; Science & Engineering Magazine, July/August 2012

# KATIE KORTEKAAS

**B.A., C.P.P. (S.M.C.A.)**

*I.S.A. Certified Arborist*

*I.S.A. Tree Risk Assessment Qualified*

*OMNRF Ecological Land Classification Certified*

*OMNRF Certified Butternut Health Assessor*



**EDUCATION:** B.A., University of Guelph (Horticulture and Urban Geography)  
C.P.P. (S.M.C.A.), Purchasing Management Association of Canada

## **WORK EXPERIENCE:**

Katie holds a Bachelor's degree in Urban Geography and Horticulture from the University of Guelph. She is an I.S.A. Certified Arborist and an I.S.A. qualified Tree Risk Assessor. She is Ministry of Natural Resources and Forests (OMNRF) Ecological Land Classification (E.L.C.) Certified and a OMNRF Butternut Health Assessor. She is also the firm's head Horticulturist.

Katie regularly conducts Tree Inventories, Evaluations, Tree Valuations and Tree Health Assessments across Southwestern Ontario. She generates extensive tree-related reports and supplementary documents at times used in court proceedings and financial settlements related to expropriations. Katie routinely conducts field reviews for municipal tree plantings, stormwater management ponds, reforestation plantings, and soft landscaping in parks, schools, and housing developments.

Katie has experience in a wide variety of projects including development-based tree assessments and reports, private property inventories, health assessments and tree resource valuation. She has worked on several valuations concerning Municipal expropriations, including the 407 expansion. In Lefroy, Innisfil, ON, she conducted a tree inventory through an environmentally sensitive area for the client's trail layout. This included identifying valuable trees for preservation and recommending layouts for the trail.

Katie holds a C.P.P. (S.M.C.A.) Designation from the Purchasing Management Association of Canada in affiliation with the University of Western Ontario, Ivey School of Business.

Prior to joining the firm in 2004, Katie had over 25 years of public sector administration and project management experience, including tendering, purchasing and contract management for three of Ontario's largest School Boards, a GTA Municipality and a Toronto Hospital and Health Care Campus.

Katie is fluent in English and German.

# TYLER MAIN

**B.L.A.**

*Project Manager  
Landscape Designer*



## **EDUCATION AND WORK EXPERIENCE:**

Tyler Main has been a member of the firm for over 5 years. Tyler is bilingual, speaking English and French, resulting from 12 years of immersed French education and time spent living in Europe. Tyler was born in Switzerland, and has also lived in Alberta.

Tyler graduated from the University of Guelph, Bachelor of Landscape Architecture, with honors. Tyler was very active in the student community at the University of Guelph, being a member of the Landscape Architects Student Society (LASS) and holding a position as an Executive Member of the Student Federation of the Ontario Agriculture College (SFOAC). Tyler spent 5 months studying Landscape Architecture, Design, and Environmental Impact, in Australia, at the University of Canberra, prior to completing his University of Guelph Studies. Tyler has taken training courses on avoiding construction claims by improving the quality drawings, specifications, and bidding documents at the "Epic Education Centre"

Tyler has worked in both commercial and residential landscape maintenance, as well as the construction industry in Toronto. Additionally, he has experience in landscape design and construction in cottage country. This work involved identifying shoreline erosion issues, then developing and implementing a strategy for restoration and riparian work.

Tyler has a wide array of experience on different projects for both private and public clients. He works on projects from the inventory, analysis, and conceptual stages, through to detailed design, and construction administration. Tyler has worked on several commercial developments, stormwater management ponds, residential developments, and public parks. Tyler contributed to the detailed design plans as well as construction administration for Longworth Park, in Bowmanville. Recently, he has been working with several schoolboards across the G.T.A., Durham Region, and Kawartha Pine Ridge Region on playground design and implementation, focusing on natural play features. Also noteworthy, Tyler is currently working on the design and construction administration of visual screening for 11 solar farms across Ontario.

Tyler is highly skilled in many programs including AutoCAD Civil 2017, LandFX, Photoshop, InDesign, SketchUp, Thea Render, Microsoft Project and all other related software used within the firm. Tyler has 9 years experience using AutoCAD software for drafting. Tyler has a wide array of experience on different projects for parks, playgrounds, recreational trails, and open space areas. He works on projects from the inventory, analysis, and conceptual stages, through to detailed design, and construction administration.

# SHERYL TAO

Hon. Dipl.

*Landscape Design Technician  
Senior AutoCAD Technician*



## **EDUCATION AND WORK EXPERIENCE:**

Sheryl Tao, has been a member of the firm for 10 years. Sheryl has a Landscape Design Technician Diploma from Humber College, graduating with honours, receiving a President's Letter for her program excellence. She also has a Bachelor's Degree of Agriculture majoring in the Ornamental Horticultural Program from China Agricultural University in Beijing, China. Sheryl is fluent in English and Mandarin.

While in China, Sheryl participated in large public space and parks construction for 5 years. She also has several years' experience working in the Ontario based landscape construction industry for commercial and public space planting and hardscaping.

Sheryl is highly skilled in using AutoCAD and AutoCAD Civil. She has over 12 years experience using AutoCAD and related software. She assists in landscape plans, graphic renderings, and detailed grading and drainage, and cut and fill exercises. She is highly skilled in other software including LandFX, Photoshop, InDesign, SketchUp and all other related software used within the firm. She has worked on many grading and drainage plans for parks, playgrounds and schools. She has had several years of related work experience with other landscape design firms and a well-known horticultural consulting firm in Toronto.

Over the last 5 years, Sheryl has worked on over 10 playgrounds for School Boards across Southern Ontario, including KPRDSB, PVNCCDSB, TDSB, and 5 public parks across Southern Ontario. She worked on grading and drainage designs, including cut and fill calculations for Northglen park in Clarington. Sheryl also worked on the extensive detailed design plans for Cookstown Community park in Innisfil. Most recently, Sheryl has worked on the detailed plans for natural playground features at Central Public School in Toronto. Central Public School grounds design included a natural playground for two age groups, as well as an outdoor classroom amphitheatre. This design also included winding pathways to enhance experience and sensory development.



---

## **ALLISON QUINN, B.L.A.**

*Landscape Designer, AutoCAD Technician*

Allison is a University of Guelph graduate with an Honors Bachelor Degree in Landscape Architecture and a certificate in Environmental Citizenship. She traveled to Sweden studying at Lund University prior to completing her degree at the University of Guelph.

Allison has experience working landscape design and construction in cottage country, giving her knowledge and understanding of native species planting, shoreline, and residential work.

She recently completed work on playgrounds for over 5 schools in various School Boards, including Vincent Massey Public School in Bowmanville, Queen Elizabeth Public School in Oshawa, and John M James Public School in Bowmanville. Her substantial experience in natural playground design includes identifying playground needs and reflecting them in the site design. She has engaged in the planning and design of large industrial, commercial, and residential site plan developments, as well as coordinated with Engineers, Architects and other professional disciplines.



## **CAMILLE BOATE, Dipl.**

*Administrative Assistant - Graphics*

Camille Boate's design oriented diploma helps her to apply the principles and elements of design to the graphic work she generates for the firm. Camille has over 7 years of extensive Adobe Illustrator, Photoshop, InDesign, and Wordpress experience

Camille is highly effective in the Adobe and Microsoft Suites. She works on graphic images and composition for proposals, reports, and presentation documents.



---

## **ELAINE SASAKI, Dipl.**

*Billing & Administrative Support*

Elaine is a graduate of Durham College and has extensive work experience with reputable companies such as Canderel group, Scotiabank and Canada Post. She recently joined the firm as our Billing Clerk. She is proficient in the use of Microsoft Suite and BillQuick. She prides herself on correctly and efficiently producing client billing.



## **LORENA MUNOZ, Dipl.**

*Administrative Assistant - Contracts*

Lorena Munoz is a graduate of the Diamond Institute, with a passion for graphic designing. Lorena provides administrative and graphic assistance. She is fluent in both English and Spanish.

Lorena has a high level of experience in computer programs including Microsoft and Adobe Suites. She has extensive experience with Photoshop, InDesign, and Microsoft Project.

Lorena helps to prepare proposals, promotional documents, reports, and public display boards. Additionally, Lorena processes contractor invoice and helps to generate Payment Progress Certificates (PPC) for issue to clients. Lorena Has over 5 years' experience working with Contractors to properly receive and process their invoices under the direction of Senior Staff.

