

# HENRY KORTEKAAS & ASSOCIATES INC.

**Main Office:**

599 Liverpool Road  
Pickering, ON L1W 1R1  
(905) 839-5599

**Ottawa Office:**

648 Rue des Ecureuils  
Gatineau, QC J9J 3E5  
(613) 852-6776

[info@hkla.ca](mailto:info@hkla.ca)    [www.hkla.ca](http://www.hkla.ca)

*Landscape Architecture*

*Recreational Planning*

*Environmental Planning*

*Site Planning*

*Consulting Arborists*

*Tree at Risk Assessors*



# FIRM PROFILE & STRUCTURE

## HENRY KORTEKAAS AND ASSOCIATES INC.

Landscape Architects, Arborists, Environmental and Recreation Planners  
599 Liverpool Road Pickering, ON L1W 1R1  
Ottawa Office: 648 Rue des Ecureuils Gatineau, QC J9J 3E5

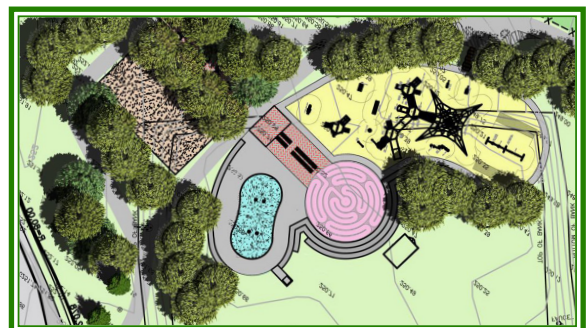
Henry Kortekaas and Associates Inc. is an eight person firm of professionals established in 1983. We provide professional services including Landscape Architecture, Environmental Planning, Recreational Planning, Site Planning, and Arboricultural Consulting for commercial and residential developments.

**Landscape Architecture** focuses on all aspects of site design – residential, estat ding other professionals such as Engineers and Architects.

**Arboricultural Consulting** studies the impact of development on tree and forest resources. Our firm works with private clients, Municipalities, and Agencies to protect and preserve these resources where possible and practical. If these resources cannot be protected, we assign fair value, based on International Standards for their compensation. As I.S.A. Tree Risk Assessors, we balance tree risks and benefits to determine the suitability of each tree for each site.

**Recreational Planning** is the design and implementation of Municipal and local parks, recreational Master Plans and golf course and driving range design. As Recreational Planners, our firm has been involved in major park land development throughout the Durham Region and GTA. We strive to achieve satisfied clients by providing creative, yet practical designs to meet local and community recreational needs.

**Environmental Planning** involves environmental and ecological assessments and vegetation inventories of proposed developments. Acting as Environmental Planners, our firm has been able to assist developers



---

and municipal agencies on ways to best utilize their land in a sustainable manner, while still maintaining the environmentally sensitive component, for residential and commercial developments, as well as park and open space developments.

Henry Kortekaas and Associates Inc. has a competent team of Landscape Architects, Environmental Planners, Consulting Arborists, and Technicians to handle projects of any scale. The preparation of drawings is done through Computer Aided Design and Drafting software, specifically through an AutoCAD Civil 3D 2015 software system. This software enables faster preparation of detailed layout plans, construction drawings, detailed grading plans and is useful in creating 3D perspective views. LandFX is a organizational and planting program that allows the creation of quick concepts and structured, detailed planting plans. The firm also uses SketchUp for 3D modeling, Thea Render for realistic 3D renders, Illustrator for graphics and graphic animations, Photoshop, Power Point and InDesign for presentations, drawings, reports and illustrations. The use of current, state-of-the-art computer hardware and software technology assists the skilled team at Henry Kortekaas and Associates Inc. to develop high quality designs for reasonable fees.

Henry Kortekaas and Associates Inc. has two in house I.S.A. Certified Arborists, I.S.A. Tree at Risk Assessors, and an OMNRF Butternut Health Assessor. The firm's Arborists are also MNR Ecological Land Classification Certified.

Henry Kortekaas and Associates Inc. is committed to implementing Universal Design to achieve full accessibility. Our firm provides the highest possible level of service to its clients by preparing superior quality designs while reflecting their concern for the environment.



---

## Licenses and Memberships

**Henry Kortekaas, B.L.A. M.E.S.**, is a full Professional member of the O.A.L.A. and C.S.L.A. for over 30 years. He is a Professional member of the 'Sports Turf Association', an Associate member of the 'Green Roofs for Healthy Cities Association' and a Professional member of the 'Parks & Recreation Ontario (PRO)'. Henry is also a member of the 'Town of Ajax Public Art Review Panel'.

**Katie Kortekaas, B.A., C.P.P. (S.M.C.A.)**, is a full member of the International Society of Arboriculture (I.S.A.), an I.S.A. Certified Arborist and I.S.A. Tree Risk Assessment Qualified. Katie is also Ministry of Natural Resources and Forests (OMNRF) Ecological Land Classification Certified as well as an OMNRF Butternut Health Assessor.

**Ryan Paliga, H.B.A., M.L.A.**, is a full professional member of the O.A.L.A. and C.S.L.A., a full member of the International Society of Arboriculture (I.S.A.), an I.S.A. Certified Arborist, is I.S.A. Tree Risk Assessment Qualified and is Ontario Ministry of Natural Resources and Forests (OMNRF) Ecological Land Classification Certified.

**Sheryl Tao**, Landscape Design Technician, AutoCAD Technician, is a Professional member of the International Society of Arboriculture (I.S.A.).

# HENRY J. KORTEKAAS

B.L.A., M.E.S., O.A.L.A.

*Principal Landscape Architect  
Environmental Planner  
Recreational Planner*



Henry Kortekaas is an accomplished and award winning Landscape Architect, with experience in Environmental, Urban and Recreational Planning and Design. Henry holds a Bachelor's degree in Landscape Architecture (BLA) from the University of Guelph ('75) and a Masters in Environmental Studies (MES) from York University ('82). Henry has over 41 years of professional experience in both the private and public sectors. It is no surprise that Henry has become known for his unique ability to find creative and appropriate development solutions for environmentally sensitive land while respecting cost constraints.

Henry founded his company, Henry Kortekaas & Associates Inc., in 1983. Through the creation of high quality and innovative design drawings, specifications, reports and renderings, Henry Kortekaas & Associates Inc. have established themselves as leaders in the field of Landscape Architecture without compromising environmental integrity. Henry Kortekaas is particularly interested in developing urban natural corridors for the benefit of residential and the natural environment.

Henry is a long-standing member of the OALA and passionate about employing the three R's (Reduce, Reuse, Recycle) in his design solutions. He is well-versed in accessibility issues having been the Chair of the Region of Durham Accessibility Advisory Committee for 4 years. Henry incorporates accessibility opportunities wherever possible.

Henry's continuous focus is innovative, universally accessible design solutions while respecting client's budgets.

---

---

# HENRY J. KORTEKAAS, B.L.A., M.E.S., O.A.L.A.

## Education

**Honors Degree Landscape Architecture** - University of Guelph, 1975

**Masters of Environmental Studies, Recreational Planning & Design** - York University, 1982

## Awards

- 2015 PRO Award of Excellence in Design for the Park of Reflection in the Town of Whitby
- Durham Region Art of Transition Creative Arts Award 2014 - Visual Arts
- Unilock Design Award - BMW Durham, 2000
- CANSPA - Canadian Spa and Pool National Awards Competition, Residential Pool/Spa/Concrete
- The Learning Partnership Award, 1999, Tap Network
- SPA Award, 1986

## Employment History

1984-Date	Principal of Henry Kortekaas & Associates Inc.
1992-1993	Town of Richmond Hill, Landscape Architect Project Manager (Short Term Contract)
1982-1984	Totten Sims Hubicki Associates, GOALRT Environmental Planner
1979-1982	City of Brampton, Landscape Architect, Parks Planner
1975-1979	David Tomlinson Landscape Architects, Junior Landscape Architect
1970-1975	Construction Superintendent of Various Landscape Construction Contract Projects

## Selected Art Sculptures

- 'Return' - Park of Reflection, Whitby
- 'The Storm' - Town of Ajax
- 'Birds in Flight' - Surefit, Ajax
- 'Inukshuk' - OPG Darlington

## Published Paper Articles

- 'The Naturalization of a Tableland Park'; Ontario Report, June 1996, pages 26-28 & 36
- 'Golf Course Maintenance'; 1997
- 'Slab Transplanting Technique. Environmental'; Science & Engineering Magazine, July/August 2012

# RYAN PALIGA

## M.L.A, O.A.L.A.

*Landscape Architect  
I.S.A. Certified Arborist  
I.S.A. Tree Risk Assessment Qualified  
OMNRF Ecological Land Classification Certified*



**EDUCATION:** M.L.A., University of Guelph

B.A, University of Toronto

### **WORK EXPERIENCE:**

Ryan holds a Masters in Landscape Architecture degree (M.L.A) from the University of Guelph. His undergraduate degree in Architecture from the University of Toronto focused on Urban Design. He has over 11 years experience and a breadth of knowledge relating to historical architecture, its unique contribution to the modernized urban landscape and integration into the physical landscape.

In addition to being a fully certified Landscape Architect, Ryan is also an I.S.A. Certified Arborist and a Qualified Tree Risk Assessor. He is also Ontario Ministry of Natural Resources and Forests (OMNRF) Ecological Land Classification (E.L.C.) Certified. He regularly conducts Tree Inventories and Tree Health Assessments across Southwestern Ontario. Ryan has extensive experience in a wide variety of projects including development-based assessments and reports, private inventories, health assessments and tree resource valuation. He has worked on several tree valuations concerning Municipal expropriations, including the 407 expansion. He currently sits on the, volunteer based, Board of Trustees for the Canadian TREE Fund - a non-profit organization dedicated to the advancement of Arboricultural knowledge through scientific research.

Ryan is very familiar with a wide range of landscape design, drafting, and mapping programs. Ryan's experience with AutoCAD Civil 3D allows him to create highly accurate cut and fill quantities for construction while allowing the client to better visualize the final design through 3D presentation. He has utilized GIS-based analysis to inform the design of several projects, creating more holistic connections and more practical functionality. He has worked on many landscape design projects ranging from street scape low impact development, townhouse development, and urban parkland development, always striving to achieve quality, cost-effective developments.

Ryan's previous employment with an Architectural Firm specializing in Historical Preservation and Adaptive Re-use, as well as Low-impact Design (LID), using LEED, together with his several years with the MNR, gives Ryan a unique insight into the underlying ecology and environmental appropriateness of good design.

# KATIE KORTEKAAS

**B.A., C.P.P. (S.M.C.A.)**

*I.S.A. Certified Arborist*

*I.S.A. Tree Risk Assessment Qualified*

*OMNRF Ecological Land Classification Certified*

*OMNRF Certified Butternut Health Assessor*



**EDUCATION:** B.A., University of Guelph (Horticulture and Urban Geography)

C.P.P. (S.M.C.A.), Purchasing Management Association of Canada

## **WORK EXPERIENCE:**

Katie holds a Bachelor's degree in Urban Geography and Horticulture from the University of Guelph. She is an I.S.A. Certified Arborist and an I.S.A. qualified Tree Risk Assessor. She is also Ministry of Natural Resources and Forests (OMNRF) Ecological Land Classification (E.L.C.) Certified and a OMNRF Butternut Health Assessor.

Katie regularly conducts Tree Inventories, Evaluations, Tree Valuations and Tree Health Assessments across Southwestern Ontario. She generates extensive tree-related reports and supplementary documents at times used in court proceedings and financial settlements related to expropriations. Katie routinely conducts field reviews for municipal tree plantings, stormwater management ponds, and reforestation plantings.

Katie has experience in a wide variety of projects including development-based tree assessments and reports, private property inventories, health assessments and tree resource valuation. She has worked on several valuations concerning Municipal expropriations, including the 407 expansion.

Katie holds a C.P.P. (S.M.C.A.) Designation from the Purchasing Management Association of Canada in affiliation with the University of Western Ontario, Ivey School of Business.

Prior to joining the firm in 2004, Katie has over 25 years of public sector administration and project management experience, including tendering, purchasing and contract management for three of Ontario's largest School Boards, a GTA Municipality and a Toronto Hospital and Health Care Campus.

Katie is fluent in English and German.



## **SHERYL TAO, Hon. Dipl.**

*Landscape Design Technician, AutoCAD Technician*

Sheryl Tao, has been a member of the firm for 6 years a. Sheryl has a Landscape Design Technician Diploma from Humber College, graduating with honours, receiving a President's Letter for her program excellence. She also has a Bachelor's Degree of Agriculture majoring in the Ornamental Horticultural Program from China Agricultural University in Beijing, China.

While in China, Sheryl participated in large public space and parks construction for 5 years. She also has several years' experience working in the Ontario based landscape construction industry for commercial and public space planting and hardscaping.

Sheryl is highly skilled in using AutoCAD 2015 and assists in landscape plans and graphic renderings. She is highly skilled in other software including, LandFX, Photoshop, InDesign, SketchUp and all other related software used within the firm. She has had several years of related work experience with other landscape design firms and a well-known horticultural consulting firm in Toronto. Sheryl is fluent in English and Mandarin.



## **TYLER MAIN**

*Landscape Designer, AutoCAD Technician*

Tyler Main has been a member of the firm for 3 years. Tyler is bilingual, fluently speaking English and French, resulting from time spent living in Europe and 12 years of immersed French education.

Tyler has worked in the construction industry in Toronto and has experience in landscape design and construction in cottage country - working in shoreline restoration.

Tyler is highly skilled in using AutoCAD 2015 and works on technical detailed plans and graphic renderings. He is highly skilled in other software including; LandFX, Photoshop, InDesign, SketchUp, Thea Render, and all other related software used within the firm.

Tyler was very active in the student community at the University of Guelph, participating in the Landscape Architects Student Society (LASS). Tyler spent 5 months studying in Australia prior to completing his University of Guelph Studies.

